

RUABON NEWS LETTER 477

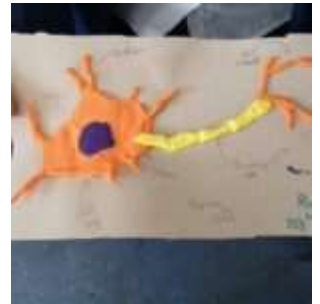
12.06.2023



Year 7 Science Work

Tuesday, 6th June 2023

Year 7 recently completed a project to create a model of a cell during Science. Here are some of the submissions



Potential

Plumbing Apprenticeship

A Dexter Plumbing & Heating Ltd

[work/https://www.ysgolrhiwabon.co.uk/year-7-science-work/](https://www.ysgolrhiwabon.co.uk/year-7-science-work/)

PRESS RELEASE

Ken Skates MS

07/06/23

for immediate publication



**Senedd Cymru
Welsh Parliament**

Accounts report has ‘further damaged public trust’ in health board, says MS

A North Wales MS has called on the region’s troubled health board to publish a ‘sobering’ report into its accounting issues.

Speaking in a Senedd debate about Betsi Cadwaladr University Health Board (BCUHB) today, Clwyd South MS Ken Skates said the Ernst & Young report ‘has caused enormous interest in north Wales and has undoubtedly further damaged public trust in the organisation’.

BCUHB is currently seeking legal advice over publication. Mr Skates said it should be a case of ‘when’ and not ‘if’ – and believes BCUHB has a duty to rebuild public trust.

He told the Senedd: “Firstly, we should recognise that NHS staff in north Wales, as across the whole of the United Kingdom, do amazing work each and every day. As others have already said, the health board in north Wales is in special measures, but so too are more than 20 health boards in England, I believe, and that can be in no small part due to pressures resulting from years of austerity.

“But the designation of special measures status should not undermine our support or commitment to the NHS. Surely it’s those American health insurance companies and private health providers who are most excited and gleeful about so many English health boards, along with Betsi Cadwaladr, being in special measures. I believe that nobody in this Chamber wants them to realise their ambitions and take apart our precious NHS.

“The Ernst & Young report has caused enormous interest in north Wales, and information emerging from it has undoubtedly further damaged public trust in the organisation.

“The report is owned by the board, and the board must rebuild public trust in the organisation. To build trust, you must provide the truth and be transparent. The board should not be asking for legal advice over whether to publish the report, but instead seek legal advice over when and in what form it should be published, in a form and at a point that will not prejudice any disciplinary action that may have been initiated or may yet be initiated.

“Finally, I’d also urge the board to publish the legal advice it received, so the public can enjoy maximum transparency.”

Health Minister Eluned Morgan said: “The audit committee of the Betsi Cadwaladr University Health Board, on advice from the Welsh Government, commissioned Ernst & Young to undertake a forensic review of accounting management after Audit Wales qualified the health board’s accounts for 2021-22 and identified internal control failures.

“This was not our report, so I can’t ask for it to be published. This report was commissioned by the health board, so any decision to publish any or all of the report is a matter for the health board.”

Ms Morgan said that if the legal advice to BCUHB is to publish the report ‘in full or in part, that is what they will do’.

She added: “The report makes very sobering reading, and sets out some really serious failings in financial control at the health board. It did not find any evidence that anyone has personally benefited from these actions, but it did amount to extremely poor accounting practices. I have received assurances from the interim chair and interim chief executive that the health board has developed, and is implementing, a financial control action plan that responds to the issues raised in the EY report and Audit Wales findings.”

The Minister said her department is working closely with the health board on the development of a financial governance and management action plan as part of the special measures framework.

She added: “North Wales Police has yet to confirm whether it considers there are grounds to launch an investigation into claims made in the report. I know the police have had early discussions with NHS counter-fraud service and the health board and that the health board is co-operating. I would expect them to act in a transparent and honest manner, should the police decide to investigate.”

-Ends-



Llywodraeth Cymru
Welsh Government



A Healthier Wales Health and social services news

PRESS RELEASE

Up to £30m investment in community care to reduce pressure on hospitals.

The Welsh Government will invest up to £30m to deliver more care at home or in the community and reduce the time people spend in hospitals.

Organisation:

[Hywel Dda University Health Board](#)

First published: 6 June 2023

Last updated: 6 June 2023

The Minister for Health and Social Services Eluned Morgan and Deputy Minister for Social Services Julie Morgan have set out how they will work with local government, NHS and other partners to strengthen local care services in order to help alleviate the kind of pressure on the health and care system seen this winter.

Building on the 670 extra community beds delivered this winter, this new investment will improve people's chances of living at home independently, increase use of technology and redeploy staff and resources to ensure people living with frailty are supported to live at home.

Where a hospital stay is needed, stronger community services will enable that stay to be as short as possible by enabling people to recover safely and comfortably at home.

The investment will also reduce pressure on hospital beds by preventing hospital admissions through early intervention.

Eluned Morgan said: "It's estimated that in less than 20 years there will be nearly 150,000 more people aged 75 or older in Wales and there is a projected increase of 61.3% in the Welsh population who are 85 and over. This is a sign of the success of our NHS and is something we should be proud of.

Older people contribute hugely to Welsh society and they tell us what matters to them is fairly simple - if they need care and support, they want to be cared for in familiar surroundings with familiar people and do not want to go to hospital unless this is really necessary.

Research has also shown that people recover better in the comfort of their own home rather than in hospital, where they are less likely to become deconditioned and less likely to pick up infections. We must focus on transforming the way we provide care to enable this.

We need to move the focus from treating short term episodes of ill-health to meeting the needs of more frail and elderly people with multiple health conditions.

I have told health boards that addressing the issue of delayed transfers of care needs to be their number one priority. Because without improving the flow through hospitals almost all other aspects of health care, including waiting lists, will be impacted. This additional funding should help them with that challenge.

Later this year the Deputy Minister for Social Services, Julie Morgan, will be setting out a long-term vision for strengthening social care.

Julie Morgan said: "I want to see consistency across Wales in the standards of care frail people can expect to get in their community, leading eventually to a community care service for Wales.

I was impressed and encouraged by what was achieved by local authorities and health boards this winter in securing 670 extra community beds across Wales. But now we need to go further, faster to make sure more people can get the

care and support they need at home or in their community and spend less time in hospitals.

Eluned Morgan added: “This will not only benefit people and improve outcomes but also improve the flow through our health care system.

This isn’t about the workforce working harder – our amazing health and care staff are already doing everything they can – this is about how decision makers must reshape services so they are fit for the future.

The investment of up to £30m will help to:

- Deliver thousands of extra hours of reablement services across Wales – providing as a safe alternative to hospital admission and to keep people at home, or so people can recover at home more quickly after a stay in hospital
- Recruit more community workers to advise people on how they can access the right support and services to help them recover and lead independent lives.
-
- Ensure every local authority has a Technology Enabled Care (TEC) Responder Service by winter 2024; currently only 10 local authorities have this facility; using the latest monitoring technology this service will ensure people can get the help they need as quickly as possible.
- Move towards 24/7 Community nursing by increasing the availability of community nurses across Wales for an extra 10 hours a day on Saturday and Sundays.
- Strengthen community specialist palliative care – by making specialist nurses available overnight.
- Practical support for local services to collaborate to put in place an individual care plan for those people identified as most at risk for urgent care; this will help to reduce hospital admissions.

Councillor Andrew Morgan (Rhondda Cynon Taf), WLGA Leader said:

“We know that social services can play a vital part in helping to care for people in their own communities and away from hospital wards.

Last winter, councils worked tirelessly with partners in health and the Welsh Government to make 670 more community beds available. Local government’s

commitment to working together with partners to meet our residents' needs remains undimmed.

However, there is no escaping the enormous pressure on the health and social care system currently. Councils have long made the case that we must think differently about health and wellbeing and to strive to prevent people from becoming ill in the first place. By working in partnership at a local level, including social services, GPs and community-based health services, as well as providers in the private and third sectors, we can help to improve our residents' prospects. It is essential that we take this chance to consider how resources and capacity can be used as efficiently and effectively as possible, and to examine what can be done differently across the system to improve the health and wellbeing of people in communities all over Wales.

Last week the Minister for Health and Social Services joined the Deputy Minister for Social Services, Julie Morgan, on a visit to the Co-ordination centre at South Pembrokeshire Hospital, where the health board, local authority and third sector work together to co-ordinate and allocate the appropriate care to people across the county.

They also met people receiving care after coming out of hospital and reablement care to prevent them returning to hospital and to live independently at home.

Jill Paterson, Director of Primary Care, Community and Long Term Care for Hywel Dda University Health Board said:

This is a priority for us and our partner organisations. By working together to coordinate and deliver our services we can support individuals to remain at home or in their community with the right level of care and support so that they spend less time in hospital.

Cllr Tessa Hodgson, Pembrokeshire County Council Cabinet Member for Social Care and Safeguarding, said:

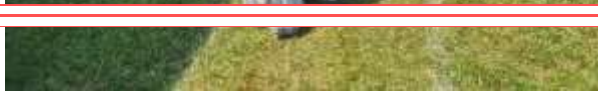
We have a history of excellent partnership working in Pembrokeshire, with health, third sector and the authority's social care delivering projects and services which supports our communities.

It's important to focus on what will benefit patients – and improve outcomes for the people who live in Pembrokeshire who need these vital health and care services.

This approach will improve the co-ordination and efficiency to ensure services are fit-for-purpose and improve the lives of those who need support the most.

Oswestry League Division 2 Tuesday 6th June (away) Llangynog A. 6 Ruabon. 4

Friends of Ruabon





Friends of Ruabon Summer Fete.

Thank you to [Alison Tynan \(Wrexham Councillor\)](#) all these photos above she has sent in—taken both before and when the Fete was in 'Full Swing'.



1251 Berwyn Sqn -
Ruabon Air Cadets |
Wrexham

Always among the first
group to be there to help
FRIENDS OF RUABON.

<https://www.facebook.com/1251BerwynSqn>

Wrexham Library News for the week beginning 11th June 2023



Diwrnod y Lluoedd Arfog 24 Mehefin 2023

Mae Diwrnod y Lluoedd Arfog yn gyfle i ddangos eich cefnogaeth i'r dynion a'r menywod sy'n rhan o gymuned y Lluoedd Arfog: o filwyr sy'n gwasanaethu ar hyn o bryd i deuluoedd y lluoedd arfog, cyn-filwyr a chadetaid. Mae Llyfrgell Wrecsam yn dangos trwy ddarparu llyfrau i'w benthyca am rôl gyfredol a hanesyddol y lluoedd arfog fel y gallwch ddarganfod mwy am y galwedigaethau pwysig hyn. Yn cynrychioli'r Llynges Frenhinol mae Women and the Royal Navy gan Jo Stanley yn esbonio sut mae'r

Llynges Frenhinol fodern wedi llwyddo i integreiddio menywod i wasanaethu ar y môr. Mae British Special Forces gan William Seymour yn cynrychioli'r Fyddin ac mae'n hanes cynhwysfawr holl Luoedd Arbennig Prydain o'u dechreuadau yn ystod yr Ail Ryfel Byd i'r 1980au. Ac ar gyfer yr Awyrlu Brenhinol mae The Birth of the RAF 1918 gan Richard Overy. Felly os ydych chi eisiau darganfod mwy am y lluoedd arfog, boed yn gyfredol neu'n hanesyddol, dewch draw i Lyfrgell Wreccsam yn ystod mis Mehefin.

Armed Forces Day 24th June 2023

Armed Forces Day is a chance to show your support for the men and women who make up the Armed Forces community: from currently serving troops to service families, veterans and cadets. Wrexham Library is showing by providing books for loan about the current and historical role of the armed forces so you can discover more about these important occupations. Representing the Royal Navy is Jo Stanley's Women and the Royal Navy that explains how the modern Royal Navy successfully integrated women into seagoing service. British Special Forces by William Seymour represents the Army and is a comprehensive history of all the British Special Forces from their beginnings during the Second World War to the 1980s. And for the Royal Air Force is The Birth of the RAF 1918 by Richard Overy. So if you want to find out more about the armed forces, current or historic, come along to Wrexham Library during June.

Room Hire



Are you struggling to find a venue for your meeting? Wrexham Library has two rooms which they can hire out to members of the public at a reasonable rate. There is a small meeting room which holds a maximum of eight people and a larger meeting room which will hold up to 25 people.

The large room also has a projector and screen for presentation use. Charges are based on the number of sessions booked, for example, morning or afternoon. If you would like to hire one of these rooms please call the library on 01978 292090.

Woodland Connections Week: 17th June-24th June

Last updated: 2023/06/07 at 4:54 PM



We're pleased to announce our first Woodland Connections Week, from 17 – 24 June. With support from Woodland Trust's Emergency Tree Fund we will be celebrating all the ways trees and woodlands are important for us, with events running across the county beginning with Acton Park Tree Party, 17th June 12-4pm; a family friendly woodland festival getting to the 'root' of why trees matter.

Clare Morgan, Outreach Manager at Woodland Trust Wales (Coed Cadw) said: "We are delighted to have awarded funding to Wrexham County Borough Council through the Emergency Tree Fund for their Woodland Connections project, which aims to plant around 4,000 trees to boost canopy cover in the area. The funding will help the council deliver on their ambitious Tree and Woodland Strategy, ensuring that not only new trees and woodlands are created but that existing trees and woods are well managed and protected. The project will also deliver for people by engaging communities and building their connection with woodland and nature in general."

The Woodland Trust's Emergency Tree Fund is supported through Amazon's \$100 million Right Now Climate Fund. With €20 million committed to projects across the UK and Europe, the fund has been set up to conserve, restore and improve forests, wetlands and grasslands, protecting wildlife habitats, biodiversity and quality of life for communities.

[Wrexham's Acton Park Tree Party](#) has a whole range of activities to get involved with; from campfire cooking to storytelling workshops. Spend some time relaxing in our hammocks or if you're feeling more energetic, take a walk around our ancient tree trail. 'We want to show people that woodlands aren't just for wildlife; they also play an

important part in supporting health and wellbeing and having access to nature, especially in urban areas, is essential to maintaining healthy lifestyle.'

There is an ever growing source of evidence that shows that being amongst woodlands reduces stress and anxiety, improving physical health through exercise and overall quality of life through improved air quality, reduced flood risk and soil stability. Importantly, as we face a changing climate, trees and woodlands will help manage carbon emissions as well as help regulate temperatures, especially in built up areas. Woodland Connections Week gives you an opportunity to discover and explore all of this as well as the rich, diverse tree heritage that shares our land.

Woodland Connections Week continues with several mid-week events you can participate in:

Monday 19 th June 10am to 2pm	Erlas Victorian Walled Garden – take a trip back in time with a visit around the grounds of Erlas, with its magnificent mulberry tree and unique environment. Guided walks on the hour (10am, 11am, 12pm, 1pm)	Erlas Victorian Walled Garden, Bryn Estyn Road Wrexham LL139TY	Refreshments available.
Tuesday 20 th June			
Wednesday 21 st June 5.30-8.30pm	Summer Solstice Nature Walk Celebrate the longest day of the year with a guided walk around Ty Mawr Country Park looking at native trees and wildlife with James Kendall from Woodland Classroom. The walk will finish with a summer wassail celebrating the new orchard with a family friendly ceremony, making leaf crowns and enjoying hot spiced apple juice around a campfire as the sun begins to set. All ages welcome	Tŷ Mawr Country Park Cae Gwilym Lane Cefn Mawr Wrexham LL14 3PE	
Thursday 22 nd June			
Friday 23 rd June 10- 12pm	City Centre Tree Trail- Join us on a guided walk learning about the wonderful trees that share our city centre and why they are so important for our future.	Wrexham Library, Chester Rd, Wrexham LL11 1WS	

Locations throughout the county have been selected for their special features and the roles they play in Wrexham. Erlas Victorian Walled Garden was a hub for the My Tree, Our Forest Welsh government giveaway last tree planting season but it also home to an ancient Mulberry tree. Join the Erlas wardens on a trip through time, taking in the grounds of this unique environment to learn about how people and wildlife can work closely together.

Tŷ Mawr Country Park provides a dramatic backdrop to celebrate the Summer Solstice in our newly planted orchard. 100 trees were planted with Brymbo Heritage Trust and country park rangers over the last year, creating a vital habitat for wildlife and local asset for communities. Trees and woodlands can offer a wide source of food for people, from managed orchards to wild foraging. In recent years our tree planting efforts recognise the important role this can offer when supporting community growing projects.

The Woodland Connection Week ends with a guided walk around Wrexham City Centre, exploring the city tree trail and discussing how trees and woodlands can support an urban environment in a changing climate. This walk will give the trees of the city centre the recognition they deserve as well as showcase some of the ways we are protecting our trees for future generations.

You can learn more about Woodland Connections Week by following our facebook and twitter pages where further details about the events in the week will be shared. You can also lend your support to the project by [signing up to our woodland pledge](#) and sharing why trees matter to you.

Wales in Bloom



It's all hands to the wheel as **Wrexham** once again gears up to enter the Wales in Bloom category and we're hoping to come up Gold again.

As part of the preparations, and to celebrate the Tour of Britain coming to the area in September, we've created unique visual displays of old colourful bicycles that will be used for floral displays. There's a lot of work now going on in our planters throughout the city centre to make sure the judges can see for themselves the attractive environment that visitors to the city centre can enjoy.

We'll also be creating a trail around the City and we'll be asking schools to make floral displays out of recycled materials that can be placed in shop windows, these will then be part of a trail that children can follow around the City centre.

The judges will be visiting us on July 11 starting at Holt, then onto the Industrial Estate to see the fantastic work that FCC has done around their waste site creating ponds, bee hives, installing solar panels even finding a rare orchid variety. From there they will go on to Rhosnesni High School where they will see their sensory garden and newly built allotment before finishing in the City centre.

One of the biggest parts of the Wales in Bloom is community involvement.

Cllr Hugh Jones, Lead Member for the Environment, said, "We've done so much work over the past few years with tree planting, creating wild flower meadows and changing to our maintenance regime to encourage wildlife and improve ecological systems in addition to reducing our carbon footprint.

"But it's not only our efforts the judges want to see. One of the biggest parts of the Wales in Bloom is community involvement. We want residents and community both on the route and across Wrexham to get in touch and let us know what they're doing to improve their area. It could be litter picking, planting up baskets and hanging baskets to improve their areas or creating floral displays.

Cllr Nigel Williams, Lead Member for Economy and Regeneration, "I am pleased that we are entering into Wales in bloom this year.

"With Wrexham's increased profile nationally and internationally, it's important we show off the city centre at its very best.

"It's great to see all of the hard work going on at the moment replanting the flower beds and planters and hanging baskets going up around the city centre with a "mixture of colourful summer bedding and sustainable shrubs and perennials that will be a beautiful show but also attract wildlife.

"This along with our events such as the Tour of Britain will make for a more vibrant, welcoming city centre that will attract more visitors to come in shopping or visit the hospitality businesses that will be a boost to our economy."

RUABON BOWLING CLUB

Maes-y Llan Lane, Ruabon, 2023

Oswestry League - Division 2

25th April Ruabon -9 v. Ceiriog Valley B - 1

Ruabon Library

Dydd Mercher **cyntaf** y mis - **1st** Wednesday of the month –

Gemau/Games/Scrabble Group 2.15
Clwb Plant/Children's Club (5-10) 3.30

Ail ddydd Mercher y mis - 2nd Wednesday of the month –

Grŵp Darllen Cymraeg 2.00
Crefftau Creadigol/Creative Crafts 1.15

Trydydd dydd Mercher y mis - 3rd Wednesday of the month

Amser i Gofio/Time to Remember
2.00

Dydd Mercher **olaf** y mis - **Last** Wednesday of the month –

Ruabon Readers
2.00 - 3.00

Dydd Mercher cyntaf y mis - 1st Wednesday of the month –

Gemau/Games/Scrabble Group 2.15
 Clwb Plant/Children's Club (5-10) 3.30

Ail ddydd Mercher y mis - 2nd Wednesday of the month –

Grŵp Darllen Cymraeg 2.00

Crefftau Creadigol/Creative Crafts 1.15

Trydydd dydd Mercher y mis - 3rd Wednesday of the month

Amser i Gofio/Time to Remember 2.00

Dydd Mercher olaf y mis - Last Wednesday of the month –

Ruabon Readers

2.00 - 3.00pm



Amser Tawel

Quiet Time



9.15 - 10.15am
Pob dydd Iau

Every Thursday

www.wrexham.gov.uk / www.wreccsam.gov.uk





Ruabon Coffee Morning

WEDNESDAYS • 10AM - 12PM

**Bowling Club Pavilion,
Maes Y Llan Lane, Ruabon**

Come and enjoy some tea, coffee, biscuits a chat each week in a warm and welcoming environment

There is **no charge** and **no need to book**, just drop by.



charity number: 1100479



Friends of Ruabon What's On 2023

Friends of Ruabon Litter Pick Saturdays

Saturday February 18 th	Saturday July 15 th
Saturday March 18 th	Saturday August 19 th
Saturday April 15 th	Saturday September 16 th
Saturday May 20 th	Saturday October 21 st
Saturday June 17 th	Saturday November 18 th

For litter pick equipment and to meet up with other Litterpickers please meet at Ruabon Village Hall on the above dates at 10am

Saturday Meetings

The Bridge End Inn
Ruabon

Wednesday Meetings

St Mary's Church Hall
Ruabon

Friends of Ruabon Monthly Meetings 2023

- Saturday March 4th 10am
- Wednesday April 5th 7pm
- Saturday May 13th 10am
- Wednesday June 7th 7pm
- Saturday July 1st 10am
- Wednesday August 2nd 7pm
- Saturday September 2nd 10am
- Wednesday October 4th 7pm
- Saturday November 4th 10am
- Wednesday November 29th 7pm

Friends of Ruabon Community Events 2023

- Bunny Hunt Saturday April 8th 1pm – 3pm
- Ruabon Summer Fete Saturday June 10th 1pm – 4pm
- Friends of Ruabon Santa Sleigh Ruabon Saturday December 2nd 5pm
- Frost Fayre Sunday December 3rd 1pm – 4pm
- Friends of Ruabon Santa Sleigh Christmas Tour
Week commencing Monday December 4th Details TBC

Llangollen International Musical Eisteddfod

Tuesday 4th July 2023 — Sunday 9th July 2023

Wanted

New volunteer Stewards

Are you aged 16 or over? Why not become a member of our volunteer Stewarding team and enjoy working in the wonderful atmosphere of music, dance and colour at the Llangollen International Musical Eisteddfod.

For more information contact:

stewards@llangollen.net

or

visit the Eisteddfod website

<https://international-eisteddfod.co.uk>

or telephone 01978 862000

John Short

June 10 at 9:55 AM ·



The adventures of Mr Brodie.
Well that was deeper than it
looked dad.....best step back
I need a good shake dry....

John Short

June 10 at 8:46 PM ·

Vaonis Vespera: NGC 7635 The Bubble Nebula
challenge to process, I didn't realise the lens had
condensed during the exposure so the stars were
distorted and the contrast poor. Used every tool at my
disposal to recover as much as I could from the original.



A

C.W. COMPUTER SERVICES

CHRIS WILLIAMS
I. T. Consultant & Support

- 01978 846 967
- 07815 478 664
- chris@cw-cs.co.uk
- www.cw-cs.co.uk

- Business User Support
- Home User Support
- Networking Solutions
- PC Repair
- I.T Consultancy

If there are any more photos that you have taken at the fete and you would like to go into the next newsletter, please do send them in.

Thank you,
Sybil (Bremner)