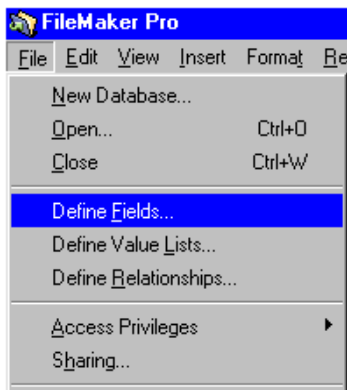




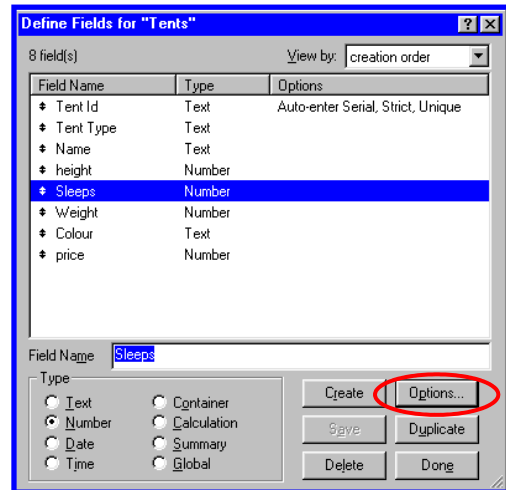
Validation rules for Numeric fields can not only be set so to strictly accept numeric data but also, that the data falls within a certain range. Thus enabling the field to be tested on the standard three tests of

- Invalid data - i.e. Text
- Extremes of data - i.e. Data that is below or above the range
- Normal data - i.e. Data that is within the range and accepted by the field.

1. After fields have been defined you can still access the field definition window by opening the **File** menu and selecting **Define Fields**

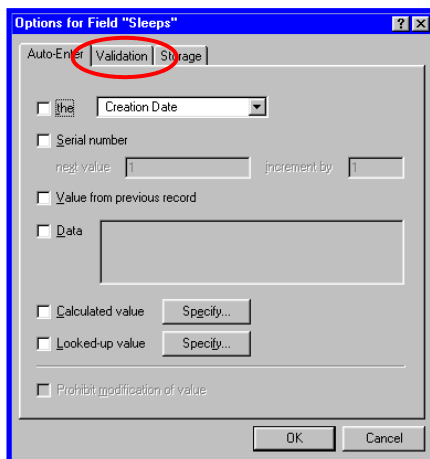


- 2.



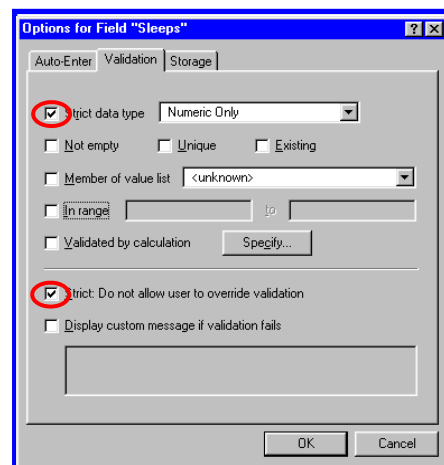
Click on the Field you wish to work on to select it. In this example **“Sleeps”**. Now click the **Options...** button

- 3.



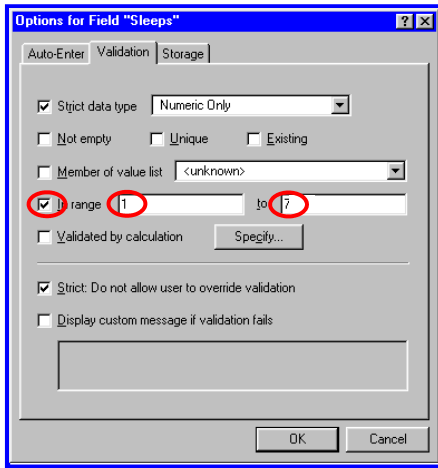
To set the validation rules first click on the **Validation** tab.

- 4.



Click in the **Strict Data type** box and the **Strict: Do not allow user to override validation**, this makes sure that the field will not accept invalid data

5.



Click the **In range** box and for this example set the range from 1 to 7. If you want to display your own error message tick the bottom check box and enter your own message. If the check box is not ticked FileMaker will generate it's own error message. Click **OK**

6.

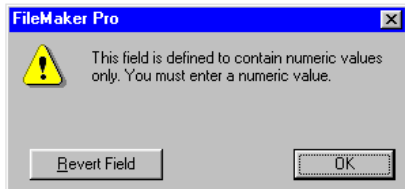


To complete the procedure click on **Done**

7. Test one

Try entering invalid data e.g. two

height	Sleeps	Weight
	two	

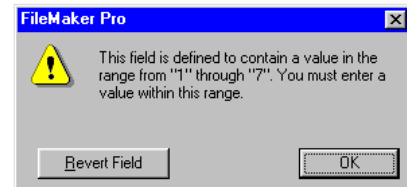


The error message shown above should appear

8. Test two

Try entering data outside the range e.g. 12

Name	height	Sleeps	Weight
		12	



The error message shown above should appear

Note

Having gone to the trouble of setting the validation rules and carrying out the testing, you will need to provide evidence of your work.

To copy error messages to paste into a Dtp package, press **Alt** on the keyboard at the same time as **Prt Scr**.