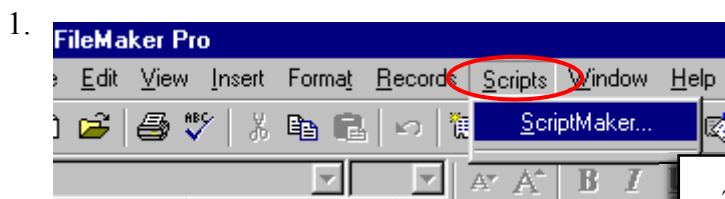
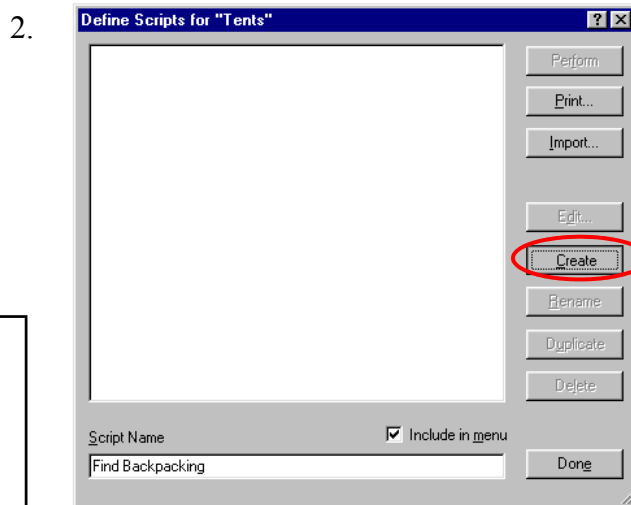


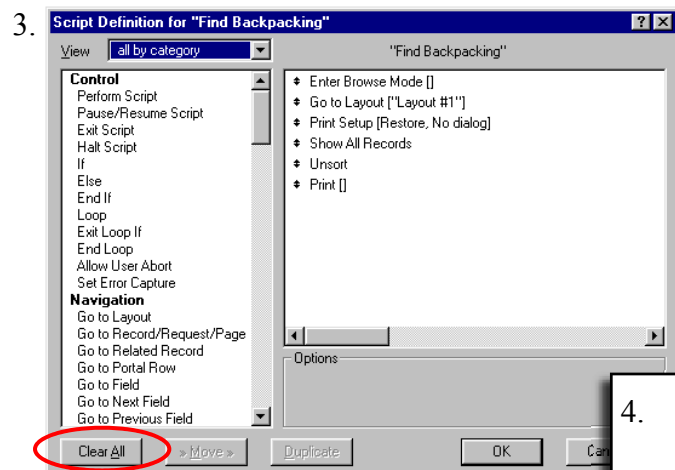
Scripting FileMaker’s scripting feature can turn a plain uninteresting database into a dynamic interactive database solution. It is this feature that enables your FileMaker solution to become a software solution in its own right.



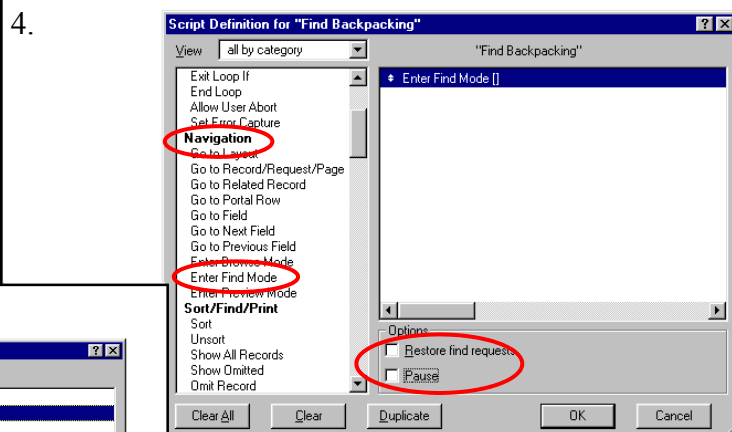
To begin scripting select **Scripts** from the top menu and select ScriptMaker....



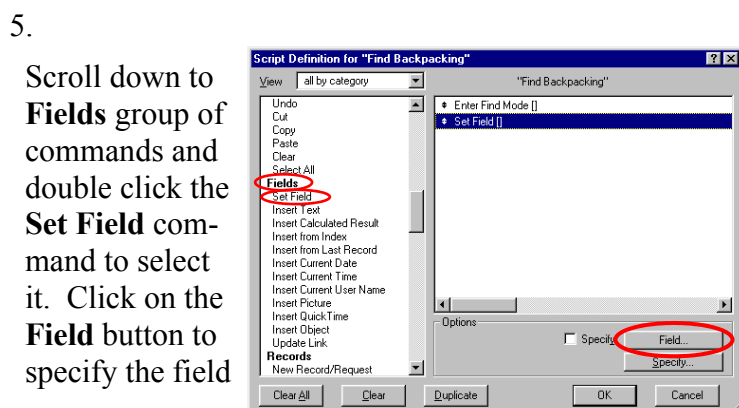
Name you script in this case “Find Backpacking” then click on the **Create** button



FileMaker tries to help by giving you some common scripting lines. You don’t need these so click on the **Clear All** button.



Scroll down the scripting commands until the **Navigation** group is reached and double click on **Enter Find Mode** but, make sure that in the Options box neither the **Restore find request** or **Pause** boxes are ticked.



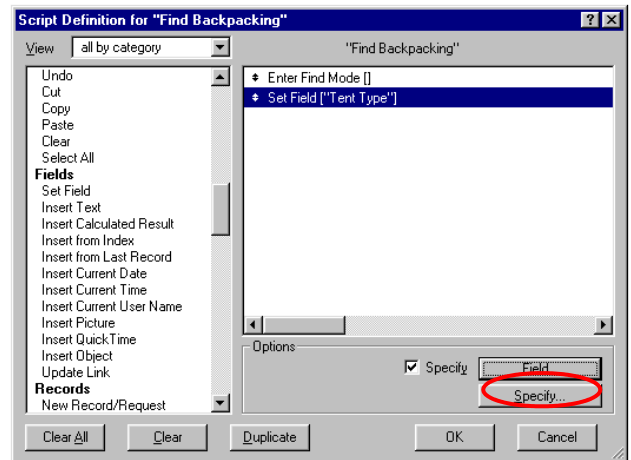
Scroll down to **Fields** group of commands and double click the **Set Field** command to select it. Click on the **Field** button to specify the field

6.



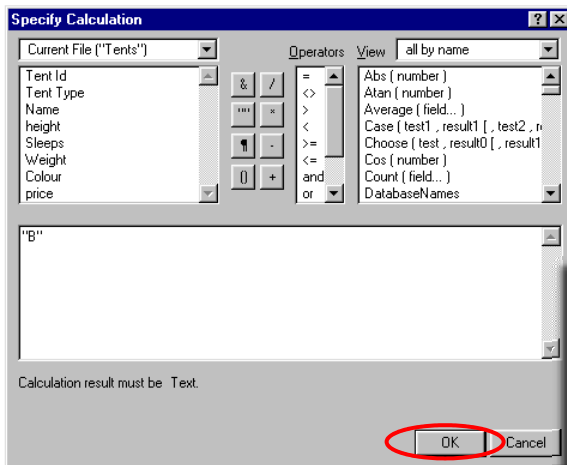
A list of the fields in the current file appears, click on the required field in this example "Tent Type" and click **OK**

7.



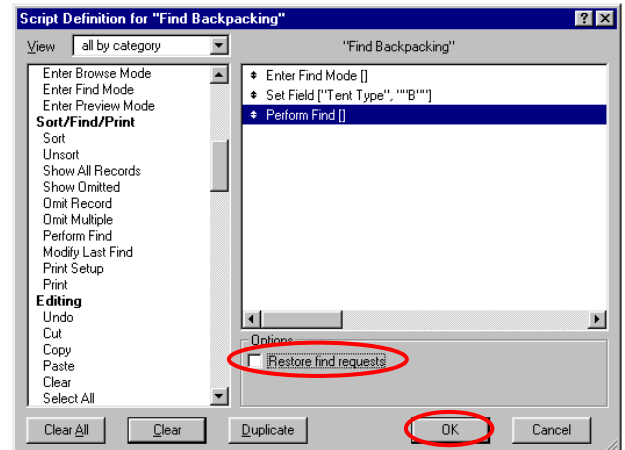
Now click on the **Specify** button to enter the Query

8.



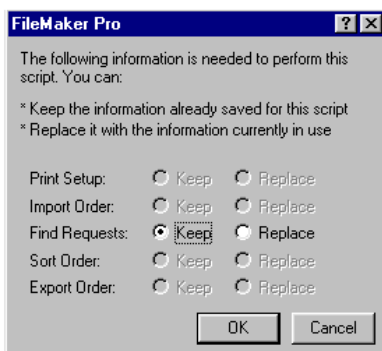
Enter your query, for this example **B**. Don't forget to enclose your query in "" or FileMaker will look for a field in the name of your query. Then click the **OK** button.

9.



Scroll up to the **Sort/Find/Print** group of commands and double click **Perform Find**. Make sure that the **Restore find** box is blank. Then click **OK**.

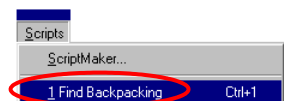
10.



You can ignore this window and click **OK**.

Click **Done** on the next window to appear

11. **Testing**



Test your script by opening the **Scripts** menu and clicking on your script which now appears under ScriptMaker....